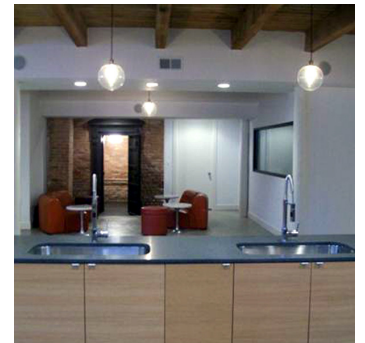
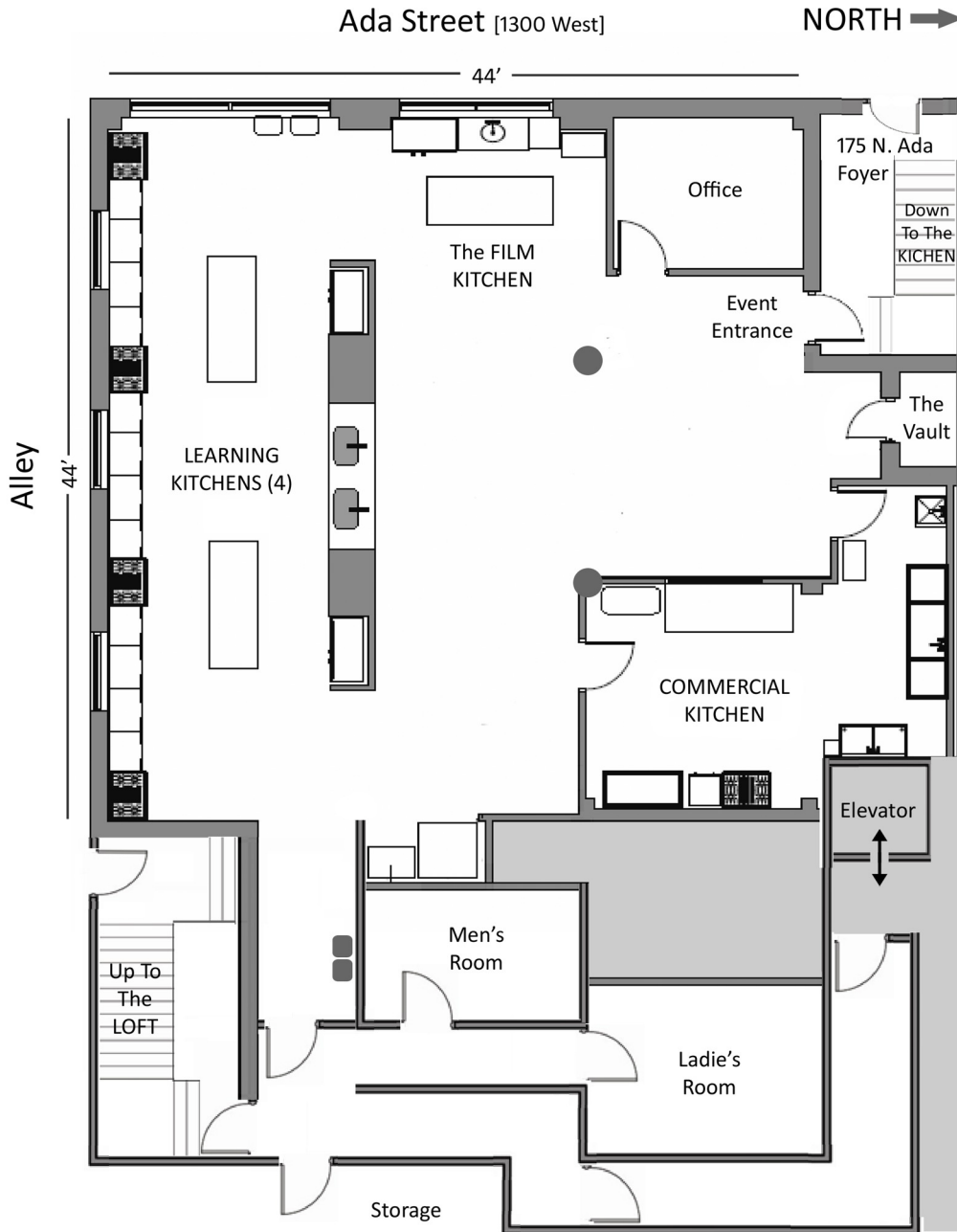




# Venue Space

## The KITCHEN



### Capacities

Total Space:	2,600 Sq. Ft.
Convertible Space:	2,000 Sq. Ft.
• Theater:	60
• Reception:	110
• Banquet:	60

### Venue Amenities

- Partially Exposed Brick Walls
- 12' Exposed Beam Loft Ceiling
- Men's & Women's Rest Rooms
- Front and Rear Entrances
- ADA Building Access
- Six 32" HD Monitors
- Dual Climate Control HV/AC
- Modern Pine Cabinetry
- Dimmable Pendant Lighting
- Recessed Ceiling Lights
- Natural Window Lighting
- Portable Bar/Induction Stovetop
- Five Full Size Learning Kitchens
- Four KitchenAid Refrigerators
- High Capacity Ice Machine
- Full KitchenAid Small Wares

**Centered Chef**  
 177 North Ada St.  
 Chicago, IL 60606  
 (312) 226-2433  
 centeredchef.com  
 info@centeredchef.com